

Object and Action Classification with Latent Variables

Hakan Bilen¹

hakan.bilen@esat.kuleuven.be

Vinay P. Namboodiri¹

vinay.namboodiri@esat.kuleuven.be

Luc J. Van Gool^{1,2}

luc.vangool@esat.kuleuven.be

¹ ESAT-PSI/IBBT

VISICS/K.U. Leuven

Leuven, Belgium

² Computer Vision Laboratory

BIWI/ETH Zürich,

Zürich, Switzerland

1 Representative Images for the Latent Models

In this section, we show representative images for the designed latent models on the Graz-02, the Pascal VOC 2006, the Caltech101 Reduced (see the paper) and the Everyday Actions Datasets.

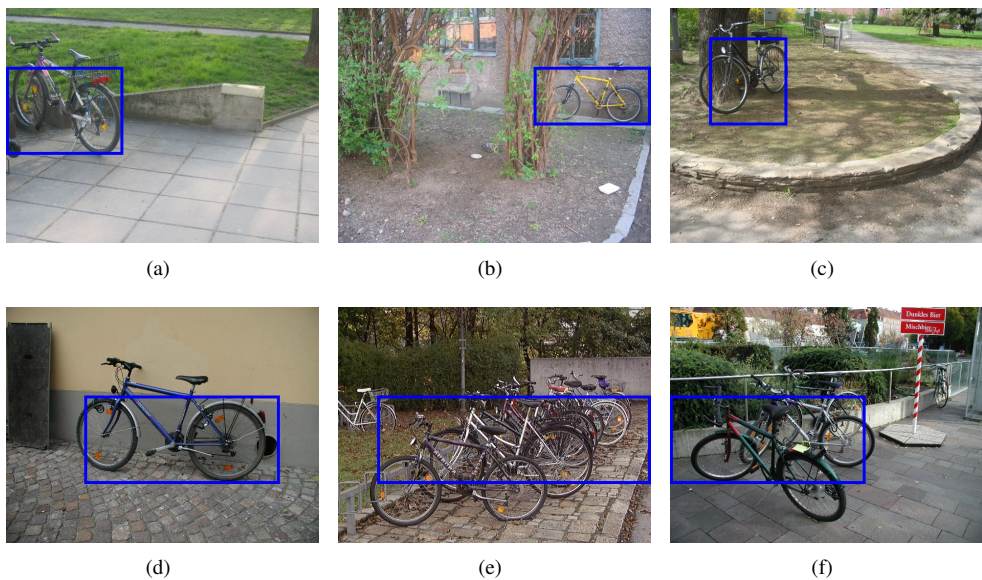


Figure 1: Crop Examples - Graz-02 - Bikes

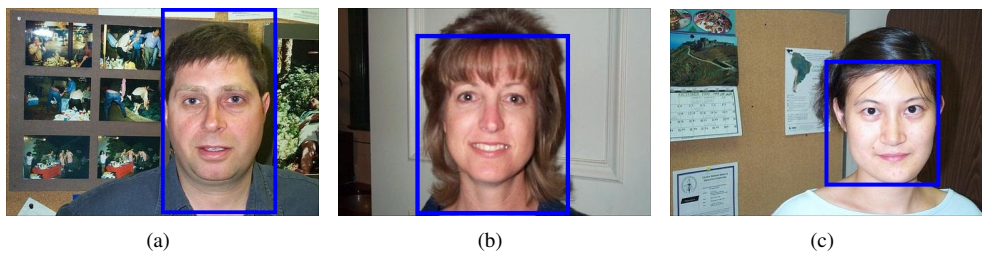


Figure 2: Crop Examples - Caltech101 Reduced - faces

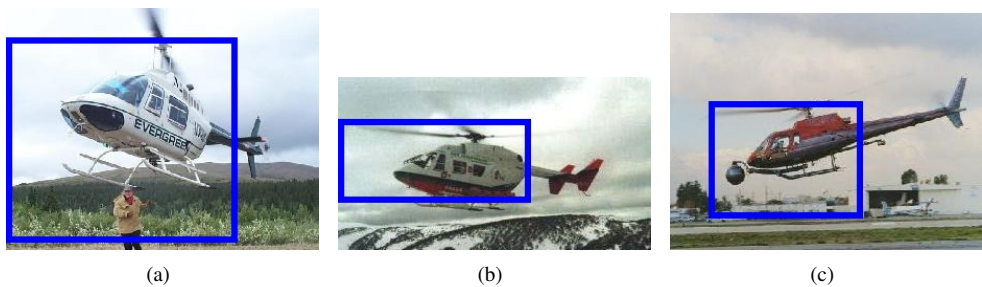


Figure 3: Crop Examples - Caltech101 Reduced - helicopters

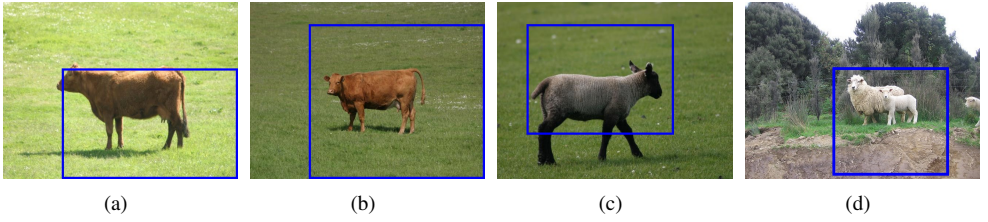


Figure 4: Crop Examples - VOC2006 - cows and sheeps

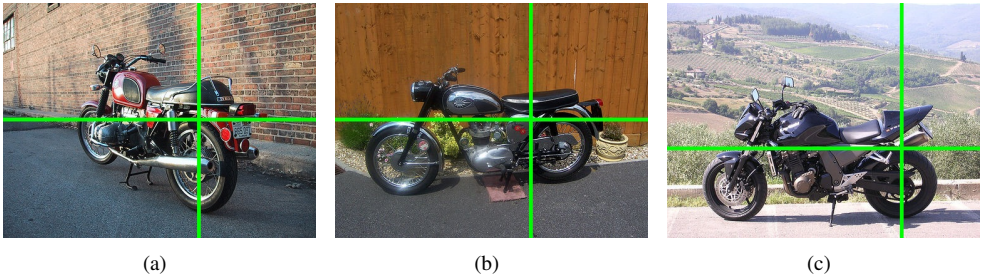


Figure 5: Split Examples - VOC2006 - motorbikes

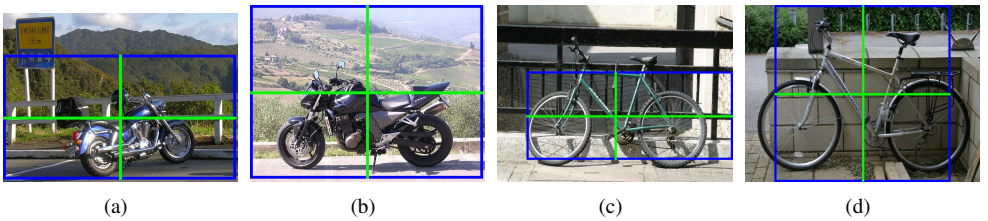


Figure 6: Crop-Uni-Split Examples - VOC2006 - motorbikes and bikes

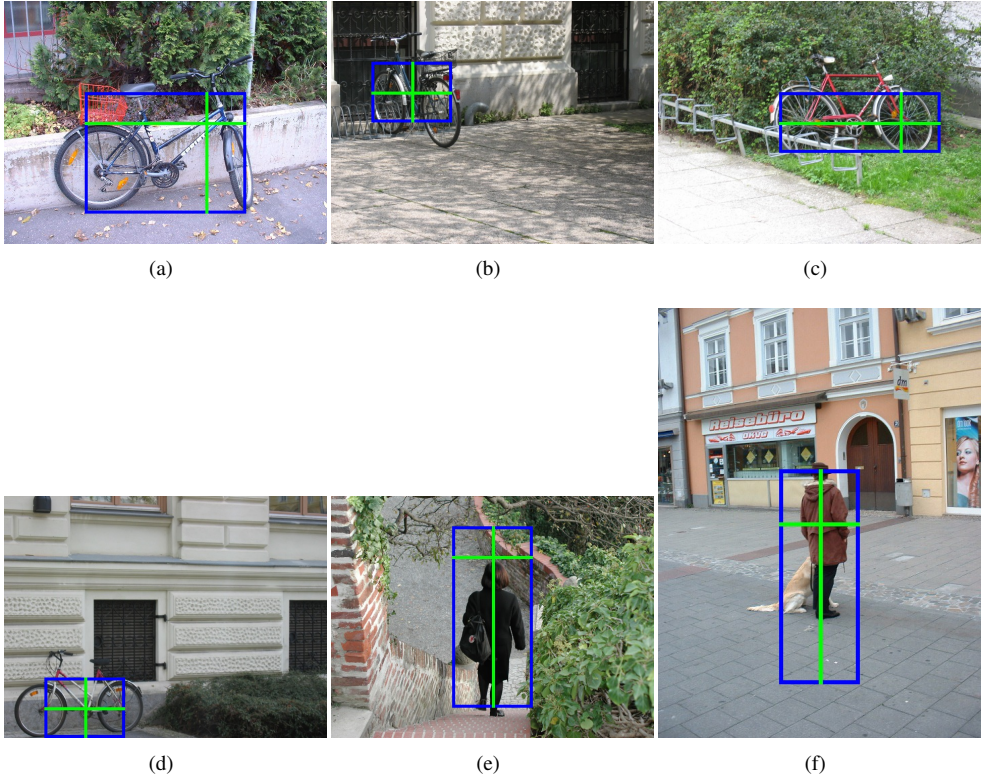


Figure 7: Crop-Split Examples - Graz-02 - bikes and person